

# **Screening Outcome Report**

1 Oct – 31 Dec 2023

## Introduction

Section 75 of the Northern Ireland Act 1998 requires the Trust, when carrying out its functions in relation to Northern Ireland, to have due regard to the need to promote equality of opportunity between nine categories of persons, namely:

- between persons of different religious belief, political opinion, racial group, age, marital status or sexual orientation;
- between men and women generally;
- between persons with a disability and persons without; and
- between persons with dependants and persons without.

Without prejudice to its obligations above, the Trust must also have regard to the desirability of promoting good relations between persons of different religious belief, political opinion or racial group.

Belfast Trust's Revised Equality Scheme was formally approved by the Equality Commission in September 2011. The revised Scheme outlines how we propose to fulfil our statutory duties under Section 75. Within the Scheme, the Trust gave a commitment to apply the screening methodology below to all new and revised policies and where necessary and appropriate to subject new policies to further equality impact assessment.

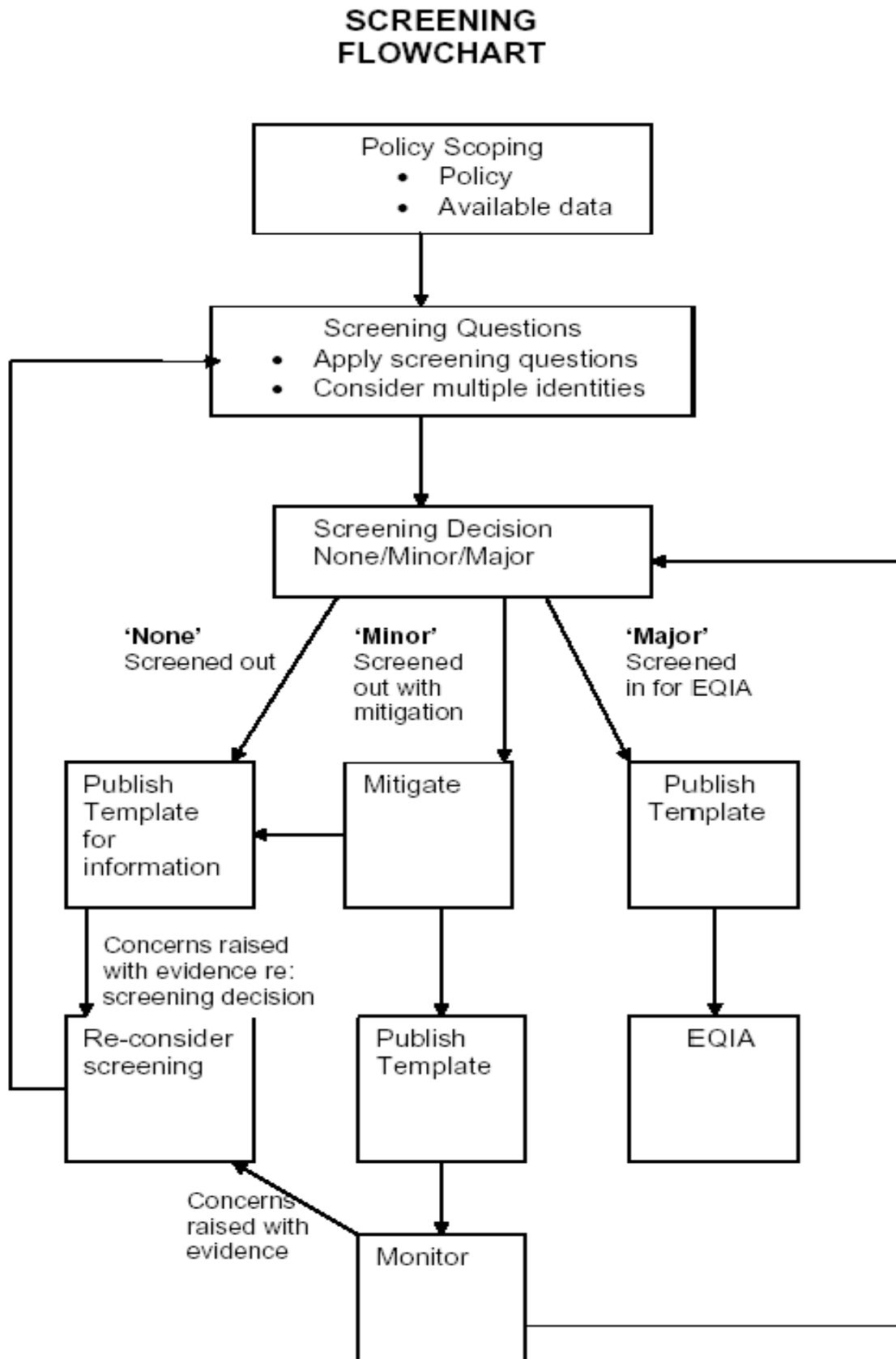
- What is the likely impact of equality of opportunity for those affected by this policy/proposal, for each of the Section 75 equality categories?
- Are there opportunities to better promote equality of opportunity for people within Section 75 equality categories?
- To what extent is the policy/proposal likely to impact on good relations between people of different religious belief, political opinion or racial group?
- Are there opportunities to better promote good relations between people of different religious belief, political opinion or racial group?

In keeping with the Trust's commitments in its Equality Scheme the Trust has applied the above screening criteria to new policies and proposals. Screening identifies policies that are likely to have an impact on equality of opportunity and or good relations.

Screening identifies the impact of the policy/proposal as major, minor or none.

- If major – an Equality Impact Assessment may be carried out.
- If minor – consider mitigation or alternative policy and screen out.
- If none – screen out and give reasons.
- Ongoing screening – for strategies/policies that are to be put in place through a series of stages – screen at various stages during implementation.

Figure 1 provides a flowchart of how screening is conducted in Belfast Trust.



Belfast Trust also committed within its Revised Equality Scheme to prepare and publish for information regular reports on its screening exercises. Belfast HSC Trust has provided detail on all screenings undertaken since 1 September 2011 when the Trust received Equality Commission approval for their revised Equality Scheme. To further promote openness and transparency, there is a link to each completed screening template on the Belfast Trust's website. [www.belfasttrust.hscni.net](http://www.belfasttrust.hscni.net).

The quarterly screening report shall detail all policies screened over a three month period and includes decisions reached.

This screening report outlines the screening outcomes from 1<sup>st</sup> Oct – 31<sup>st</sup> Dec 2023.

## Communication and Engagement

Belfast Trust recognises the importance of stakeholder involvement – one of the 5 key strategic objectives that Belfast Trust devised at the outset was that of Partnership – we are committed to improving health and well-being through existing and new partnerships with a range of individuals, representative groups and voluntary and community organisations. The Trust is committed to providing people led services, drawing on the years of experience and listening to the needs and feedback that meaningful consultation can yield. There is a need to continue to effectively engage and work collaboratively with a wide range of stakeholders including Trust staff, Trade Unions, service users, carers, commissioners, primary care, public representatives and independent providers.

The Trust is committed to promoting personal and public involvement in all its activities. The development of new policies and proposals will be supported by effective engagement processes to ensure that staff, service users and all interested parties are fully involved. Planning for, and delivering safe, clinically effective and cost-effective services requires close collaboration at many levels.

If you have any queries about this document, and its availability in alternative formats (including Braille, disk and audio cassette, and in minority languages to meet the needs of those who are not fluent in English) then please contact:

Orla Barron  
Equality Lead  
Belfast Health and Social Care Trust  
First Floor, Administration Building  
Knockbracken Healthcare Park  
Saintfield Road  
Belfast  
BT8 8BH

Telephone: 028 95046567  
Textphone: 028 90637406  
[orla.barron@belfasttrust.hscni.net](mailto:orla.barron@belfasttrust.hscni.net)

This report details each proposal and the screening outcome – for ease of reference, readers can access the full completed screening template via a link to the Trust website. Should you have concerns which are based on supporting evidence regarding the screening decision, please contact the Health and Social Inequalities Manager as above and outline your concern along with the supporting evidence. Belfast Trust will duly consider rescreening the proposal.

## Outcome of Screening

The screening outcomes are outlined below. Four possible outcomes are recorded:

1. The policy has been **'screened in' for equality impact assessment;**
2. The policy has been **„screened out' with mitigation or an alternative policy proposed to be adopted;**
3. The policy has been **'screened out' without mitigation or an alternative policy proposed to be adopted.**
4. The policy will be **subjected to ongoing screening.** For more detailed strategies or policies that are to be put in place through a series of stages, screening should be considered at various times during implementation.

Screening Outcome Report – 1 April – 30 June 2023

Description of Policy or Proposal	Screening Outcome
<p><b>02/11/2023</b></p> <p><a href="#"><u>Employers Procedures for External Beam Radiotherapy and Sealed Source Brachytherapy</u></a></p> <p><b>Purpose:</b></p> <p>These employer’s procedures have been revised in line with IR(ME)R to ensure that the Belfast Health &amp; Social Care Trust, hereafter referred to as the BHSCT, complies with the regulations. The procedures outline the roles, responsibilities and entitlement of Referrers, Operators (including Medical Physics Experts) and Practitioner’s involved in External Beam Radiotherapy and Sealed Source Brachytherapy. (These procedures should be read in conjunction with the current BHSCT Radiation Safety Policy).</p>	<p><b>Screened Out – Clinical/Technical in nature</b></p>
<p><b>28/09/2023</b></p> <p><a href="#"><u>Management of CROUP (Laryngotracheobronchitis) in the Children’s Emergency Department</u></a></p> <p><b>Purpose:</b></p> <p>This guideline has been designed to assist in the diagnosis and management of children with croup. It includes a management algorithm and a list of potential differential diagnoses. It is essential to differentiate croup from other causes acute upper airway obstruction. The main differentials are: · Acute foreign body aspiration · Acute anaphylaxis Bacterial upper airway infections e.g. epiglottitis, bacterial tracheitis.</p>	<p><b>Screened Out – Clinical/Technical in nature</b></p>
<p><b>14/11/2023</b></p> <p><a href="#"><u>Therapeutic Paracentesis in the Management of Malignant Ascites, NI Cancer Centre and Bridgewater Suite</u></a></p> <p><b>Purpose:</b></p> <p>This policy provides guidance on the use of therapeutic paracentesis in the management of malignant ascites.</p>	<p><b>Screened out – clinical in nature</b></p>

## Screening Outcome Report – 1 April – 30 June 2023

<p><b>20/10/2023</b></p> <p><a href="#"><u>Policy and procedures for chemotherapy competent nurses in relation to the safe administration of intravenous/Subcutaneous Cytarabine in the community</u></a></p> <p><b>Purpose:</b></p> <p>The aim of the policy is to provide paediatric nursing staff in the community settings across the Northern Ireland with clear guidance to promote the safe administration of intravenous/subcutaneous Cytarabine (as prescribed by medical staff)</p>	<p><b>Screened out – clinical in nature</b></p>
<p><b>19/12/2023</b></p> <p><a href="#"><u>Guidance for the management of patients who become ill during and/or within six weeks of receiving radiotherapy (at NICC BHSCT)</u></a></p> <p><b>Purpose:</b></p> <p>This policy has been written to provide agreed guidance with regards to the guidance for the management of patients who become ill during and/or within six weeks of receiving radiotherapy (at NICC BHSCT). This is for patients who are being treated by the Belfast Trust only. Consequently, patients will be treated consistently according to agreed standardised guidelines. This guidance should be read in conjunction with the BHSCT Skin Care Guidelines for patients receiving radiotherapy</p>	<p><b>Screened out – clinical in nature</b></p>



<p><b>23/10/2023</b></p> <p><a href="#"><u>Paediatric Emergency Management of Hyperkalaemia for Patients aged 16 years and under</u></a></p> <p><b>Purpose:</b></p> <p>This guideline will aim to define a standard for the safe and consistent management of paediatric patients with hyperkalaemia in Royal Belfast Hospital for Sick Children (RBHSC). The aim of this document is to define how hyperkalaemia in paediatric patients should be identified by its clinical feature. Once identified this policy will guide on implementation of best practice for treated and especially how to limit the potentially serious adverse effects that can be associated with this treatment.</p>	<p><i>Screened out – clinical in nature</i></p>
<p><b>02/11/2023</b></p> <p><a href="#"><u>Guideline for the management of Diabetic Ketoacidosis (Patients &gt;16yrs old and cared for in an adult ward)</u></a></p> <p><b>Purpose:</b></p> <p>To define optimal management of HHS in the Belfast Health and Social Care Trust and align with the regional protocol across Northern Ireland          To standardise the management of HHS across the Trust and harmonise this with the recently released Regional guideline which is based on the Joint British Diabetes Societies guidelines for management of Hyperosmolar Hyperglycaemic State.</p>	<p><i>Screened out – clinical in nature</i></p>

## Screening Outcome Report – 1 April – 30 June 2023

<p><b>02/11/2023</b></p> <p><a href="#">Guideline for the management of Hyperosmolar Hyperglycaemic State</a></p> <p><b>Purpose:</b></p> <p>To define optimal management of HHS in the Belfast Health and Social Care Trust and align with the regional protocol across Northern Ireland          To standardise the management of HHS across the Trust and harmonise this with the recently released Regional guideline which is based on the Joint British Diabetes Societies guidelines for management of Hyperosmolar Hyperglycaemic State.</p>	<p><b><i>Screened out – clinical in nature</i></b></p>
<p><b>03/11/2023</b></p> <p><a href="#">Guidelines for the use of granulocyte colony stimulating factor (GCSF) in adult oncology &amp; haematology patients with solid tumours for SACT.</a></p> <p><b>Purpose:</b></p> <p>To ensure a safe, standardised approach to the use of GCSF in adult oncology &amp; haematology patients. The policy outlines the indications for use of GCSF as primary prophylaxis, secondary prophylaxis and in cases of prolonged neutropenia.</p>	<p><b><i>Screened out – clinical in nature</i></b></p>
<p><b>10/11/2023</b></p> <p><a href="#">Treatment of Hypophosphataemia in Adults</a></p> <p><b>Purpose:</b></p> <p>To have a best practice clinical guideline for the management of adult patients with hypophosphataemia in BHSCT taking into account available phosphate preparations.</p>	<p><b><i>Screened out</i></b></p>

<p><b>04/12/2023</b></p> <p><a href="#"><u>Guidelines for the use of insulin pumps in patients aged over 16 years undergoing investigations or procedures. (SG 01/15)</u></a></p> <p><b>Purpose:</b></p> <p>This guidance aims to provide staff with guidance on how best to manage the insulin pump in patients undergoing investigations and procedures. The policy documents advice on the management of patients treated for diabetes using an insulin pump, undergoing investigations or procedures.</p>	<p><i>Screened out – clinical in nature</i></p>
<p><b>19/12/2023</b></p> <p><a href="#"><u>Guidelines For Empirical Antibiotic Prescribing In Hospitalised Adults over 16 years of age</u></a></p> <p><b>Purpose:</b></p> <p>The purpose of this guideline is to provide consistent Trust-wide guidance for the empirical antibiotic management of hospitalised patients with the commonly encountered bacterial infections. To improve the quality of antibiotic prescribing and standardise the use of antibiotics across the Trust.</p>	<p><i>Screened out – clinical in nature</i></p>
<p><b>28/11/2023</b></p> <p><a href="#"><u>Protocol for the Management of Substance Misuse in Mental Health, CAMHS and Intellectual Disability Inpatient Wards</u></a></p> <p><b>Purpose:</b></p> <p>This protocol has been developed to ensure a standardised approach across all of Belfast Trust’s Mental Health, CAMHS and Intellectual Disability inpatient facilities in the management of substance misuse including illicit drugs, non-prescribed medication and alcohol. It provides staff with guidance to prevent the use of illicit drugs, non-prescribed medication and alcohol in inpatient wards. This will include the offering of appropriate interventions to all patients who report substance misuse; are believed to be misusing substances; or are at risk of misusing substances.</p>	<p><i>Screened Out - with Mitigation</i></p>

<p><b>20/10/2023</b></p> <p><a href="#"><u>Prevention and management of sharps injuries and blood and body fluid exposures (BBFEs)</u></a></p> <p><b>Purpose:</b></p> <p>This policy outlines the processes to be followed in the Trust to prevent and manage sharps injuries and blood and body fluid exposures (BBFE's). It provides clear guidelines about the responsibilities of all staff, including managers of departments/ facilities, and the roles of the Occupational Health Service, Emergency Departments (ED's) and Infection Prevention &amp; Control (IPC) in relation to the prevention and management of sharps injuries and BBFEs in the workplace. Ensuring that best practice is followed in the Trust, in order to protect staff, patients, clients and others from the risks associated with sharps injuries and BBFEs, prevention of sharps injuries and BBFE's. Utilising safe systems of work to minimise the risks of transmission of blood borne viruses between patients, clients, health care workers and others, by appropriate management and follow-up of any sharps injuries and BBFE's, using the evidence based care pathway.</p>	<p><b>Screened out – clinical in nature</b></p>
<p><b>27/11/2023</b></p> <p><a href="#"><u>Genito-urinary Medicine GUM Clinic – Renaming the waiting areas</u></a></p> <p><b>Purpose:</b></p> <p>This is an Equality Screening for changes to the names of the waiting areas in the GUM clinic in the Royal Victoria Hospital. Since the GUM clinic opened, there have been two waiting areas – male and female. In September last year, the decision was made to change the waiting areas to Zone A and Zone B. There were a number of reasons for this change.</p>	<p><b>Screened out – Minor Impact, with Mitigation</b></p>

<p><b>28/11/2023</b></p> <p><a href="#">Policy for Accessing Immunoglobulin Therapy in the BHSCT</a></p> <p><b>Purpose:</b></p> <p>Human Normal Immunoglobulin can be used as replacement therapy or immunodulatory therapy in the treatment of specified disease states. The emergence of new therapeutic indications and widespread 'off-label' usage has substantially increased demand on immunoglobulin. This ever-increasing demand on a product whose manufacturing process cannot react readily to these increases due to its raw material being a blood component, means there can be global shortages in immunoglobulin supply. A Demand Management Programme has been developed, which classifies conditions for which immunoglobulin is used according to their priority in times of shortage i.e. ensuring supply is maintained for high priority patients (because of risk to life without treatment) even in times of acute shortage.</p>	<p><b>Screened out - technical nature</b></p>
<p><b>19/10/2023</b></p> <p><a href="#">Protocol for Nurse-led Fluorescein and Indocyanine green angiography</a></p> <p><b>Purpose:</b></p> <p>The purpose of this protocol is to ensure that there is clarity of the roles and responsibilities of the appropriately trained practitioner in relation to ophthalmic imaging, and patient care. To clarify for staff their roles and responsibilities in relation to Ophthalmic Imaging and patient care. It also aims to ensure good practice is maintained and procedures are carried out in a safe and timely manner.</p>	<p><b>Screened out</b></p>

## Screening Outcome Report – 1 April – 30 June 2023

<p><b>19/10/2023</b></p> <p><a href="#">Nurse Led Botox Clinic</a></p> <p><b>Purpose:</b></p> <p>The purpose of this protocol is to ensure that there is clarity of the roles and responsibilities of the appropriately trained practitioner in relation to administering Botulinum Toxin. The objectives of this policy are to clarify for staff their roles and responsibilities in relation to administering Botulinum Toxin. It also aims ensure good practice is maintained and procedures are carried out in a safe and timely manner.</p>	<p><b>Screened out</b></p>
<p><b>03/10/2023</b></p> <p><a href="#">Parecoxib Injection for Acute Pain (Children 1-18 years)</a></p> <p><b>Purpose:</b></p> <p>The purpose of this guidance document is to provide information for the safe and effective prescribing and administration on IV Parecoxib for children in the treatment of acute pain.</p>	<p><b>Screened out – clinical in nature</b></p>
<p><b>03/11/2023</b></p> <p><a href="#">Tracheostomy tube in situ – Care of Adult Patients in the Acute Hospital Setting</a></p> <p><b>Purpose:</b></p> <p>To provide clear guidance for Trust staff caring for patients with a tracheostomy in order to prevent complications and reduce the risk of inappropriate airway management by outlining standards for:</p> <ul style="list-style-type: none"> <li>• Patient management (clinical and organisational).</li> <li>• Knowledge and skills.</li> <li>• Equipment.</li> <li>• Documentation</li> </ul>	<p><b>Screened out – clinical in nature</b></p>

<p><b>26/10/2023</b></p> <p><a href="#">Radiotherapy Department Quality Policy Manual</a></p> <p><b>Purpose:</b></p> <p>The Quality Policy Manual details the Radiotherapy Department’s Quality Policy and the structure of the Quality Management System (QMS). The Quality Manual has several purposes:</p> <ul style="list-style-type: none"> <li>· a means to communicate the vision, values, policies and objectives of the organisation,</li> <li>· a means of showing how the system has been designed,</li> <li>· a means of showing linkages between processes,</li> <li>· a means of showing individual responsibilities, · a training aid,</li> <li>· a means of demonstrating compliance with external standards and regulations e.g. (ISO 9001:2015) and IR(ME)R.</li> </ul>	<p style="text-align: right;"><b>Screened out</b></p>
<p><b>10/10/2023</b></p> <p><a href="#">Guidelines for empirical surgical antibiotic prophylaxis in children 0-16 years in BHSC</a></p> <p><b>Purpose:</b></p> <p>To provide consistent Trust-wide guidance for the antimicrobial prophylaxis of surgical site infections in specific types of paediatric surgery.</p>	<p style="text-align: right;"><b>Screened out</b></p>
<p><b>30/11/2023</b></p> <p><a href="#">Draft Equality Impact Assessment on the Implementation Plan to close Muckamore Abbey Hospital</a></p> <p><b>Purpose:</b></p> <p>The purpose of the draft Equality Impact Assessment on the Trust’s proposed series of actions to ensure closure of MAH by June 2024. The EQIA has considered the information available and has assessed the potential impact on current and future patients, families, carers and staff and identified measures to lessen the any potential impact of the closure.</p>	<p style="text-align: right;"><b>Screened In</b></p>

<p><b>30/11/2023</b></p> <p><a href="#"><u>Operation policy for Ambulatory Care Centre</u></a></p> <p><b>Purpose:</b></p> <p>The policy aims to provide high quality multi-disciplinary and comprehensive person centred service to patients whom require medical investigation and nursing treatment/ intervention in a suitable environment.</p>	<p><b><i>Screened out – No Impact</i></b></p>