

# New Maternity Hospital

A newsletter for staff in the Belfast Trust

Issue 13

Dec2021

Welcome to the Newsletter.

Currently the handover date is June 2022 with move in 20 weeks later. The delays to date have often been outside the control of Trust and Contractors. They include changes in Legislation and Guidance, unforeseen ground issues and Covid Restrictions

Building update:

**Inside** Fabric and finishes are ongoing throughout the building. Closing of ceilings, installation of Joinery, flooring and painting where possible. As you can see from one of the photos included some carpets are down!

**Outside..** Ground work preparation has progressed as far as possible, trees have been planted and as you can see below, things are definitely beginning to take shape.

In This Issue

UPDATE ON NEW MATERNITY HOSPITAL.

EDUCATION TEAM VISIT TO THE SITE

PHOTO GALLERY

REMINDER OF WHICH DEPARTMENTS ARE MOVING TO THE NEW BUILDING



Belfast Health and Social Care Trust

## Education Team visit to the Maternity Site



The education team were invited to view the site on 7th October 2021.

This has facilitated the education team to start planning the induction programme for delivery during the 20 weeks of commissioning, prior the service move.

We must take every opportunity for preparation to ensure the multidisciplinary team receives appropriate induction to their working environment in the new hospital. The training will be relevant to each staff members role, grade and department.

It will also include orientation, training on new equipment, fire evacuation and for some staff, scenarios and emergency situations.

### Site Visits

Whilst we realise that staff are keen to see their new hospital, access to the site remains limited. We are trying to find alternative ways to keep our staff up to date with the progress.

Recently, 19th Aug, we experimented with a 'Zoom Tour', (thank you to Zoe Meneilly who assisted) however as the Wi-Fi has not yet been turned on in the building, reception was patchy in areas.

Colleagues in Corporate Communication have kindly agreed to record short videos of each department to be shown on the Trust YouTube site.

The first, the ABC, can be viewed on <https://youtu.be/Olk7ph0v-58>



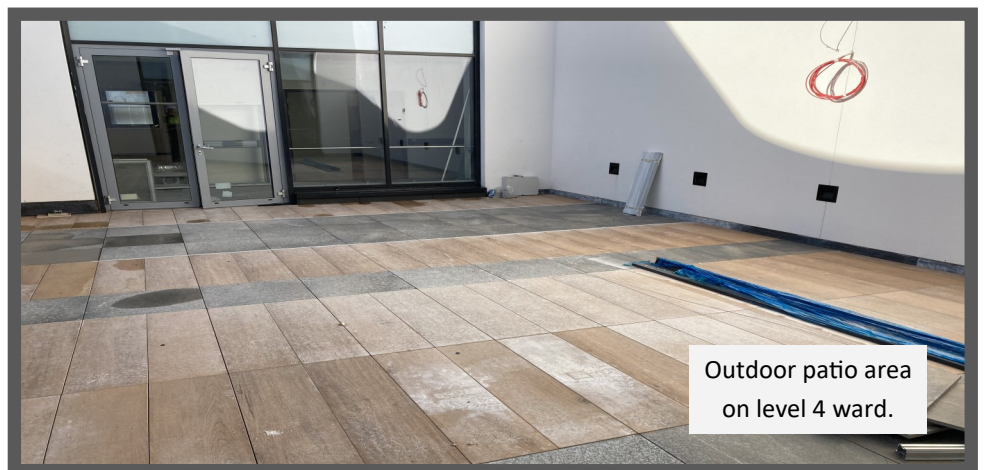


0



Outdoor areas to the front and side

06/10/2021



Outdoor patio area on level 4 ward.



Restaurant level 2



Offices level 4,  
carpet laid!



An example of  
the signage in  
lift lobbies.



Emergency Theatre  
level 3

A reminder of which departments will be located in the  
New Maternity hospital,

Level 4	10 bedded Ward			Office Accommodation
Level 3	<b>Neonatal Unit:</b> 45 cots (29 single rooms 4 X 4bedded)	<b>Delivery Suite :</b> 6 induction beds 15 birthing rooms (6 with pools)	Obstetric Theatres : 2 elective 1 emergency	Neonatal Parents Accommodation : 7 bedrooms
Level 2	Midwife Led Unit (ABC) 10 rooms with pools	Admission Unit (MAU)	Early Pregnancy Unit (EPU)	Cafe
Level 1	Staff Changing, Transport Equipment Base		PCSS, Catering & Storage	

<b>Critical Care Building (level 3)</b>		<b>Maternity (level 3)</b>		<b>New Children's Hospital (level 3)</b>
Theatres with lift access to ICU	Woman ↔	Delivery Theatre Delivery suite Neonatal	Neonates ↔	Paediatric Thea- tre Paediatric ICU

Diagram (above) illustrates how the New Maternity hospital will connect to other hospitals on the Royal site via connecting corridors on level 3.