

Please remember

This is a general guideline on the appointments required. However, the eye socket / eyelids are different and appointments may need to be adjusted depending on the individual.

Some patients occasionally require extra appointments. This will be explained to you if needed.

You will be kept under regular review by the clinic for adjustments, polishes and ongoing care.

Useful contacts

Here is a list of charities that can be contacted for further help and support:

- **Royal National Institute for the Blind (RNIB)** – Emotional Support Team on 028 9032 9373 or visit the website: www.rnib.org.uk
- **Microphthalmia, Anophthalmia and Coloboma Support** on 0800 169 8088 or visit the website: www.macs.org.uk

- **Royal Society for Blind Children (RSBC)** on 020 3198 0225, 020 3198 0229 or visit the website: www.rsbc.org.uk
- **Childhood Eye Cancer Trust** on 020 7377 5578 or visit the website: www.chect.org.uk
- **Changing Faces** – Support for facial disfigurement on 0300 012 0275 or visit the website: www.changingfaces.org.uk
- **Macmillan Cancer Support** on 0800 808 0000 or visit the website: www.macmillan.org.uk
- **LostEye** website: www.losteve.com

Further information

If you need more advice, reassurance or information on wearing an artificial eye, please give the Artificial Eye Clinic a call.

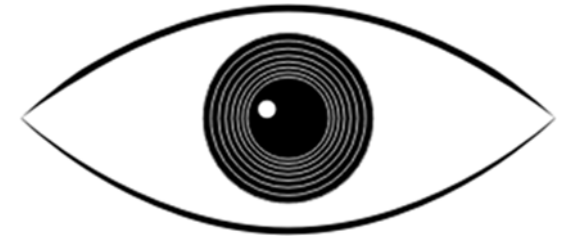
Artificial Eye Clinic
Shankill Health and Wellbeing Centre
83 Shankill Road
Belfast
BT13 1FD
Tel: 028 9504 0798



Belfast Health and
Social Care Trust

caring supporting improving together

Fitting an artificial eye



Patient information leaflet

The artificial eye

Artificial eyes are made from acrylic and are inserted into the eye socket to replace a non-existent eye.

An artificial eye is usually a curved shape and resembles a natural eye appearance. It fits directly into the eye socket behind the eyelids to support the socket and eyelids.



Artificial eyes

Preferably, you will attend the Artificial Eye Clinic before your surgery or as soon as possible afterwards to discuss your artificial eye with the ocularist who will make and fit it.

The ocularist will discuss what further procedures are required for you at future appointments.

Information leaflets will be given to you on each step in the process and how to care for your artificial eye.

After surgery, when your eye socket has healed and settled (usually around six weeks), you will attend the Artificial Eye Clinic for the fitting of your first artificial eye. This will be a 'temporary' eye. It has a hollow shape at the back, which allows the socket to heal further.

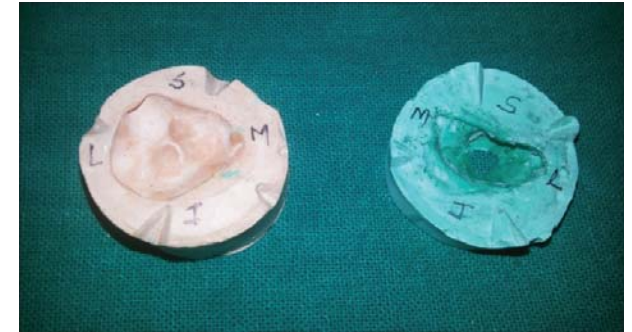
A conformer, which is a clear shell put in place at the time of surgery to maintain and protect the eye socket, will be removed from the socket by the ocularist.

The 'temporary' eye is manufactured by the ocularist for you and fitted into the socket when completed.

Instructions will be given on removing, cleaning and inserting the artificial eye.

After six to eight weeks of wearing the temporary eye, you will attend an appointment to create your permanent artificial eye. This appointment lasts about two hours.

This involves taking a mould of your eye socket (similar to a dental impression) to create the shape, size and colour of a suitable artificial eye for you.



Mould of eye socket

You will attend another appointment approximately six weeks after your mould appointment so the permanent artificial eye can be assessed in the socket for appearance and fit.

If adjustments are required, they will be made until a satisfactory artificial eye is fitted for you.

The temporary eye will be given back to you to keep as a spare.