

# New Maternity Hospital

The mystery of the missing

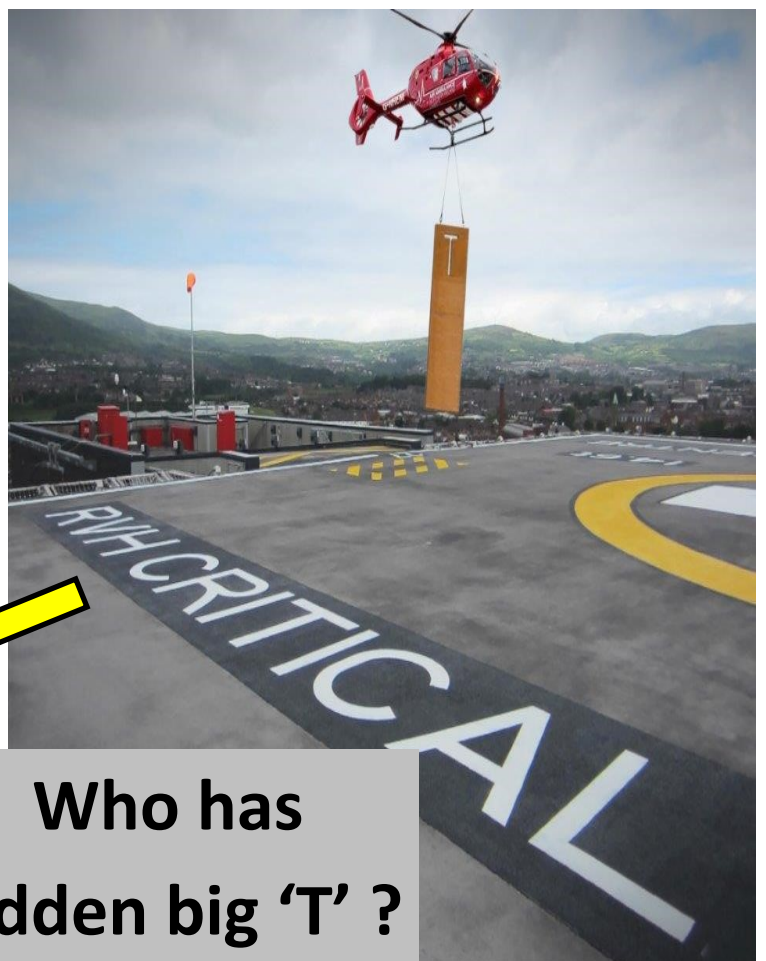
‘T’



On the 1st of April, great concern was raised re the spelling of **MATERNIY**, the second ‘T’ appeared to be missing.

Various theories were voiced including “Planning and Redevelopment cannot spell”, “it was just a pregnant pause” etc. etc. The truth however, less exciting, is that the letters were brought to the site and are in a temporary position to facilitate site access. The second ‘T’ is safely tucked behind the Y, as demonstrated below.

Also included below is the photograph added to the Belfast Trusts Twitter feed to reassure all that we have it under control!!! Really.....



Who has hidden big ‘T’ ?



In This Issue

COVER STORY:

THE MYSTERY OF THE  
MISSING T

UPDATE ON NEW  
MATERNITY HOSPITAL.

PROGRESS PHOTOS

WHOS WHO IN THE  
COMMISSIONING TEAM

NEW APPOINTMENT

## ***Update on New maternity hospital***

The project continues to advance despite the challenges of Covid-19. There has been significant progress internally with the dry lining finishing and some rooms have been completed. Door installation is on going throughout.

Externally, the façade is approximately 90% complete, there are small areas of stone cladding, louvre installations, zinc and curtain walling in progress.

### **Construction programme:**

1st phase of construction is projected to complete Spring 2022

Followed by a 20 week period of commissioning

Projected opening of the New Maternity hospital building Summer 2022

Final phase, work commences on linking corridor to Critical Care building when service has been relocated to new Maternity Hospital.

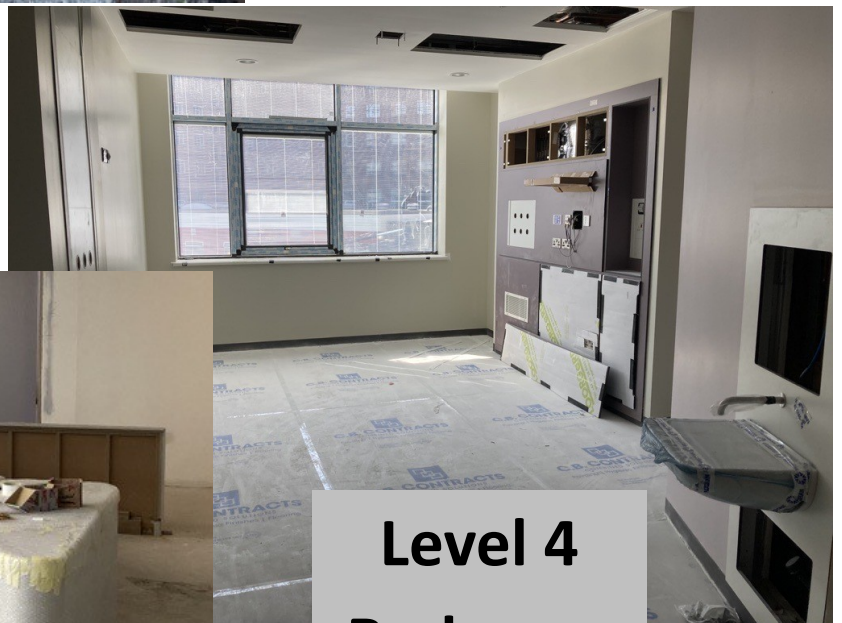


As before we have included photographs of both the exterior and interior to give you a flavour of the building and progress until site visits are permitted.



**Reception Area**

**Midwife Station Delivery Suite**



**Level 4 Bedroom**





# Neonatal Room and Corridor



## An introduction to our Commissioning Team

CO DIRECTOR OF CAPITAL PLANNING AND  
REDEVELOPMENT

KAREN BROOKES

PROJECT CONSTRUCTION LEAD  
JASON MC CANN

PROJECT COMMISSIONING LEAD  
SIMON DALY

CLINICAL COMMISSIONING MANAGER  
ANNE STRATHERN

CARMEL MAGUIRE:

Leading on:

IT DEPT

PCSS AND ESTATES

NIAS/NIFB

SALLY HAMILTON/HEATHER LOWRY

Leading on:

NEONATAL

THEATRES

JACKIE STACEY

Leading on:

DELIVERYSUITE

ABC

EPU

MAU

WARD LEVEL 4

### What is commissioning?

This is the period of 20 weeks when the building is handed over from the Contractor and we get it ready to open.

- Some of the work is prepared in advance and we are currently working on equipment lists, what's needed, what can come over from the current hospital, and what needs to be bought.
- The cleaning and setting up of the building and equipment will take place.
- The training and induction of all staff who are moving into the new building, will take place.
- There will be induction tours for all staff who come from other departments and have input into the woman or babies (e.g. radiography, pharmacy, PCSS, medical and surgical staff both from RVH and RBHSC.)
- There will also be tours for anyone who would like to see our new Maternity Hospital

And finally:

