

# Dermatology

## Request for Advice



Working together



Excellence



Openness & Honesty



Compassion



Belfast Health and  
Social Care Trust

caring supporting improving together

## Aim

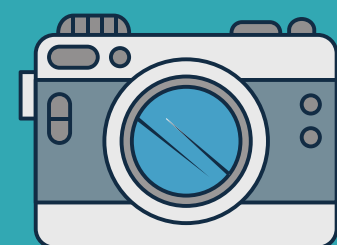
- The aim is to provide timely advice for adult patients (>13 years) with **inflammatory skin conditions** via CCG.
- Now available to all BHSCCT GP practices

From a pilot in South Belfast, **69%** of requests were managed with Consultant advice and no onward referral needed



## When to use:

- Rashes in adults (>13 years) e.g. eczema, psoriasis, urticaria, acne, hyperhidrosis
- Management advice in patients NOT currently under the care of a Dermatologist.
- Photos\* very helpful - please attach if relevant and possible.



## Not suitable:

- Skin lesions - suspected skin cancer, urgent or routine (refer through usual CCG pathway).
- Dermatology emergencies

\*Guidance for using CCG for RFA and photo sharing is attached