

Welcome to Barbour Ward

Royal Belfast Hospital for Sick Children



Ward routine

Start of day shift - handover	07:30 – 08:00
Morning ward rounds	08:00 – 09:00
Breakfast	09:00
Play activities/ School	09:30 – 12:00
Lunch	12:00
Play activities	13:00 – 15:00
Rest period	14:00 – 15:00
Evening ward rounds	16:00 – 16:30
Dinner	17:00
Start of night shift - handover	19:30 – 20:00
Children's supper	21:00



Welcome to Barbour Ward

Barbour Ward is the main surgical, orthopaedic, spinal and renal ward in the Children's Hospital.

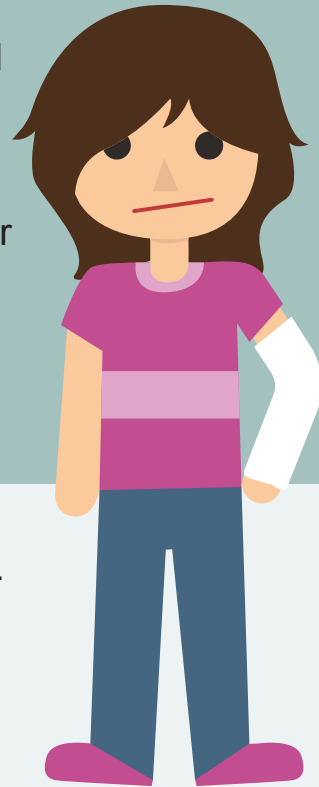
We care for a wide range of children with varying age groups from birth to adolescence.

Your child's admission to Barbour Ward may have been for an elective procedure or as an emergency admission or even as a transfer from another hospital but regardless our AIM is to make your time spent with us as safe and comfortable as possible.

While your child is on Barbour Ward our multi-disciplinary team of health care professionals will deliver the care your child needs to recover in a safe and friendly environment.

We will explain and involve you in all decisions made about your child's care.

Parents/carers are seen as valuable members of the team and therefore we are keen to involve you in certain aspects of your child's daily care. If you have any questions, please ask a member of staff.



Visiting

- Visiting is open to parents/guardians and you are welcome to stay with your child throughout their stay in hospital
- To minimize the risk of infection only two visitors to a bed-space at any given time
- Only parents/guardians can visit after 8pm unless agreed with nurse in charge
- Due to hospital policy and risk of infection young children/siblings are restricted from visiting on the ward. This is to protect both the patient and the visiting child from cross infection
- Please wash your hands on entering and leaving the ward. There are hand sanitisers provided at entrance/exit doors and at each bed-space.



Parental overnight facilities

- Due to limited space on the ward only one parent/guardian to stay overnight with their child
- There are two parents' bedrooms available on the ward with single beds. Linen will be provided. These are vacated on a daily basis, so please do not leave any valuables in room
- Alternatively we have a limited number of chair beds that are allocated to parents staying overnight by the night staff. These will be put away before the start of the day shift
- For safety reasons curtains are not permitted to be fully drawn around the bed-space as we need to observe your child
- For safety reasons sleeping in the same bed as your child or placing child in chair-bed is prohibited
- There is a designated shower room and toilet facilities for parents on the ward.



What to bring

- Any medications that your child is currently taking
- Toiletries for you and your child including toothbrush, toothpaste, towels and hairbrush
- A supply of nappies and baby wipes if you have a baby or toddler
- Clothes for day and night and slippers
- Your child's favourite toy or comforter
- For older children there are a number of TV/DVD players and X-box® and Play Station® game sets. If you wish to bring your own DVDs or games please label with child's name
- Charger for mobile phone
- Please refrain from bringing any valuables or large sums of cash to the hospital. There is an ATM machine in the RBHSC mall.



Catering facilities for parents

- A parents' room is provided on the ward with microwave and fridge/freezer. Please label all food stuffs. Coffee, tea, sugar and milk will be provided
- The hospital cafeteria is located on the first floor (vouchers are provided for breast-feeding mothers)

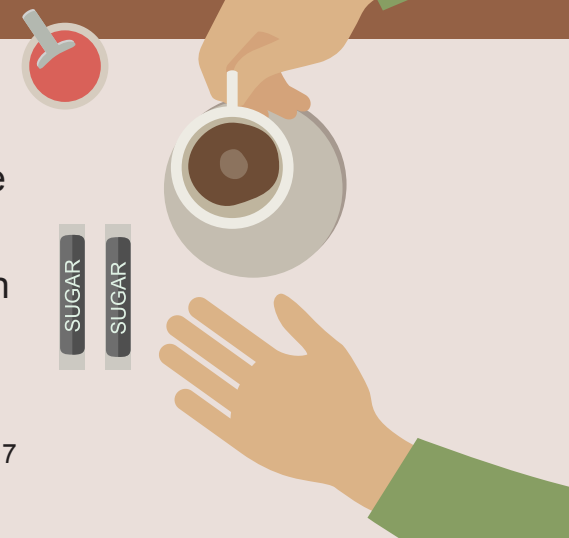
Breakfast 08:30 – 10:00

Lunch 12:00 – 13:30

Dinner 16:00 – 17:30

- Coffee Dock in main foyer (ground floor)
09:30 – 15:30
- Hospital shop in main foyer (ground floor)
08:00 – 20:00 Mon – Fri
10:00 – 16:00 Sat – Sun
closed bank holidays

- Vending machines are located on ground floor bottom of stairs and one outside canteen (first floor) some of which can facilitate bank cards.



Car parking facilities

- Car parking facilities are limited. There is a designated car park provided for families at the lower level of the Children's Hospital which provides disabled parking spaces and a lift to main foyer in RBHSC
- Please do not park in front of hospital as this is solely for dropping off and collecting purposes
- There is a small daily charge for car parking throughout Royal site. There is a payment point situated at the bottom of the steps to RBHSC
- If your stay is greater than three days please speak to a member of staff so a car park pass can be issued for one car. Please return to a member of staff on discharge
- There are also additional parking facilities in the main car park on the Royal site which can be used if RBHSC car park is full or for other family members visiting.



Support for families

- Nurse specialists
- Acute pain team
- Hospital chaplains
- Social worker
- Dietitians
- Physiotherapists
- Speech and language therapists
- Clinical psychologists
- Occupational therapists
- Play specialists
- Teachers (term time only)
- Interpreter service.



We hope the information provided helps you and your child to settle into the ward.

Please feel free to discuss any concerns you may have, or if you are at all unhappy with any element of your child's care, speak with a member of staff and we will try our utmost to resolve the problem.

In the unlikely event that we cannot resolve your concerns we will advise you of the formal complaints procedure should you wish to use it.

Please let us know what we did well and where we can improve on. Your say matters to Us!



Direct Line Telephone Number: 028 9615 0337

Free WiFi is available



Everyone has a part to play
Everyone plays a part