

Staff Briefing



Find answers to your COVID-19 questions [here](#).



Get the latest COVID Daily Update [here](#).



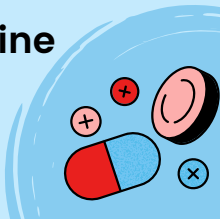
NEW TDM CHART LAUNCH TODAY

The new Belfast Trust Therapeutic Drug Monitoring (TDM) chart contains a creatinine calculator equation that uses units of measurement different from those reported by BHSCT Biochemistry Laboratories.

Both the Drugs and Therapeutics and Antimicrobial Stewardship Committees are happy that this shall not delay the launch and mandatory use of the TDM chart from today, Monday 13 December.



Staff are advised to calculate the creatinine clearance (CrCl) using the BHSCT Microguide® app, which will provide the correct result. All future versions of the chart will have this issue resolved.



MATER HOSPITAL STAFF WALK-IN CLINIC

TODAY

8am - 4pm in the Mater Hospital, The Atrium

BOOST
YOUR IMMUNITY
THIS WINTER

**FLU vaccine
COVID-19 jab**



HELPING HANDS APPEAL

[Click here for full details, link to poster & to apply!](#)

Internal winter workforce capacity appeal

For further info contact: wintersupport@belfasttrust.hscni.net or alternatively please call: 028 9615 9615

EQUALITY DATA

Please consider reviewing, updating or uploading your equality data to help us help you!

Check out our [pagetiger](#) for more info.



Come and join us for some socially distanced, outdoor Christmas Carols! Weather permitting.**

Tues 14th Dec:

BCH:

Cancer Centre Garden - 10.30am

Adult Mental Health Unit, Cloister - 11.30am

Tower Block - 12.30pm

Thurs 16th Dec:

MIH:

Atrium garden - 11.00am



**Occupational Health
Staff Helpline
028 9615 7222**

NHS 111
Call 111 and then press 1 when through to the recorded message.

HSC Belfast Health and Social Care Trust
caring supporting improving together

Working together
Excellence
Openness & Honesty
Compassion
HSC Values

**Testing for COVID-19
Call: 028 9615 2828**