



Health and
Social Care

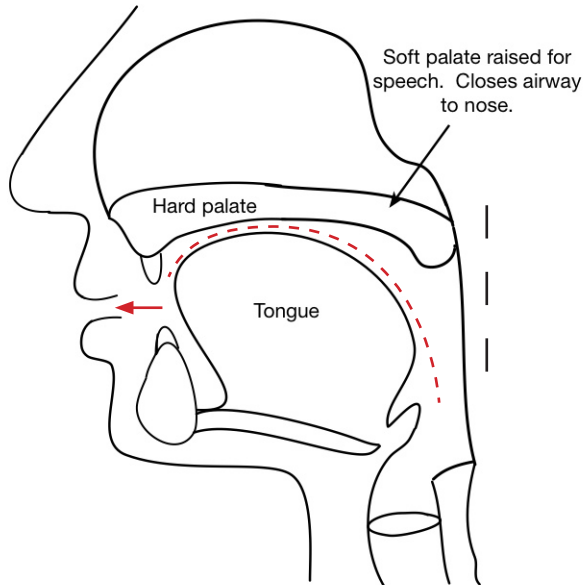


Your child's palatal X-ray

Speech & Language Therapy

What is a palatal videofluoroscopy?

A palatal videofluoroscopy is a moving image of your palate/ roof of your mouth. It allows us to see a side view of your child's soft palate as it moves.



With kind permission to use image from Cindy Williams, The Spires Cleft Centre

The soft palate should move up and down as you talk. It lifts against the back of your throat to direct the air through your mouth. The soft palate lifts for all speech sounds except for the nasal sounds, 'm', 'n', and 'ng'.

Why does my child need a palatal videofluoroscopy?

It is suspected that your child's soft palate may not be working as best as it can. If the palate does not work well, too much air escapes into your nose. This can result in a 'nasal' quality to their voice. It can also mean that some speech sounds are very difficult to learn.

Sometimes people who have palate problems get food/ drink leaking into their nose.

What will happen?

The Speech and Language Therapist (SLT) will guide your child through each step. They will help if your child needs some preparation.

Your child will sit upright on a chair and the X-ray machine will be moved next to their head.

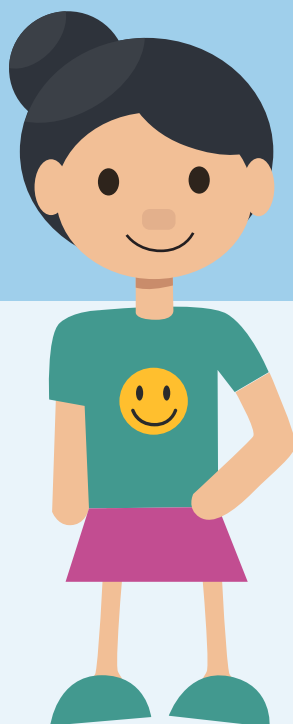
The SLT will tell your child what to say. It is important that they sit still so the images are clear.

You will be able to come into the X-ray room with your child. You will need to stand behind a screen or wear a protective apron.

Will it hurt?

No. None of the equipment will touch your child.

The equipment makes some noise but this is not very loud.



What will it show?

The X-ray will allow us to look at how their palate moves, how long it is, its shape and proportions. We will be looking to see if it is able to touch the back of the throat firmly.

What will happen next?

After the X-ray, the SLT and the surgeon will look at the images together. When we have done this, the SLT will contact you to explain the results.

Who can I ask if I have a question or concern?

If you have any queries about this clinic, you can call the Cleft Co-ordinator, Pamela Larmour, on 07385 430707. You can also email her on pamela.larmour@belfasttrust.hscni.net

The Royal Belfast Hospital for Sick Children
Belfast Health and Social Care Trust
Falls Road
Belfast
BT12 6BE