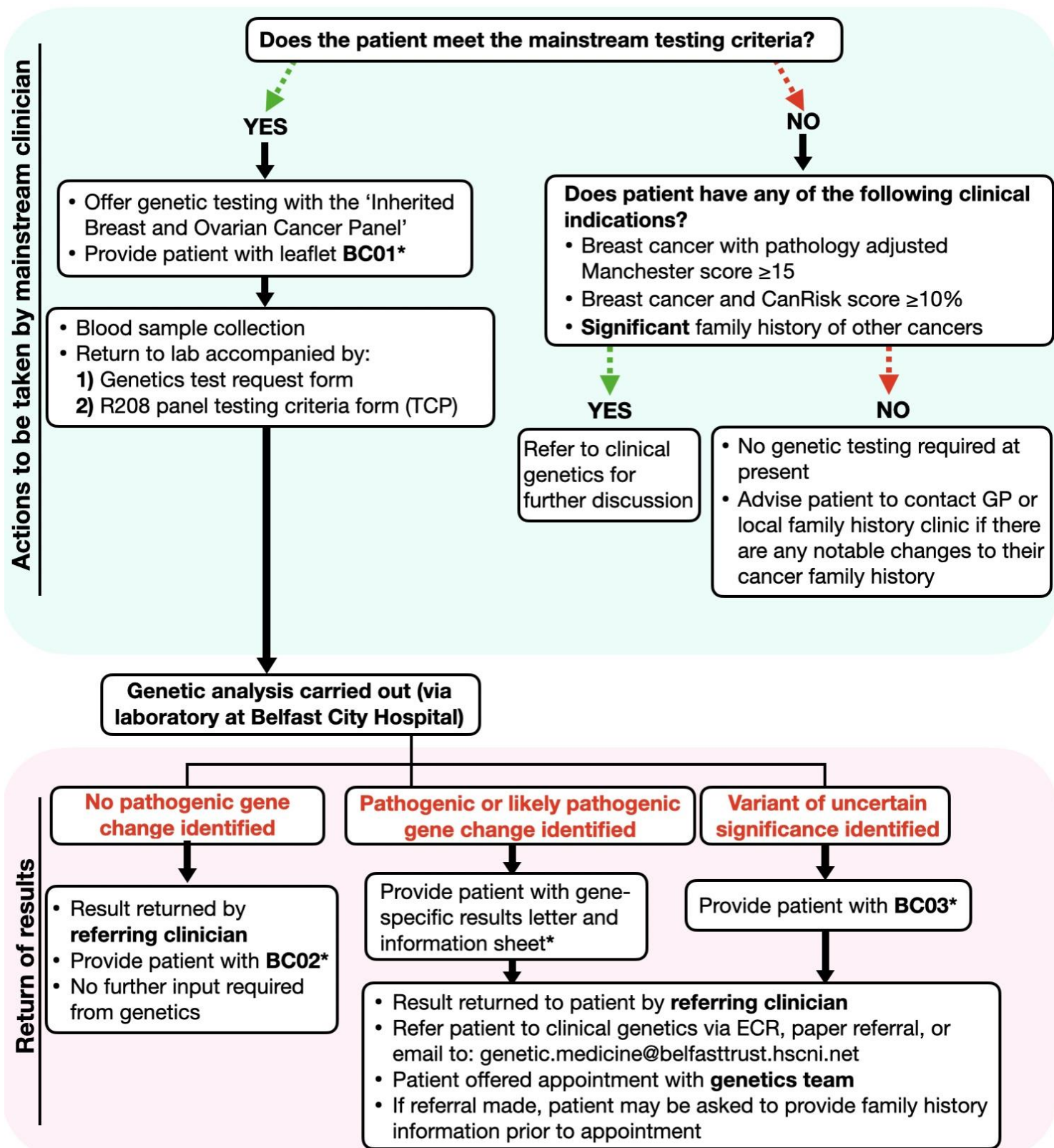


You may find it useful to use this protocol when assessing whether your patient is eligible for genetic testing:



* All leaflets (BC01-BC03) and documents referred to above can be found in the 'Patient information leaflets' section at:

<https://belfasttrust.hscni.net/service/laboratory-services/clinical-genetics/mainstreaming-cancer-genetics/breast-and-ovarian-cancer-mainstreaming/>